

gudy® window by



gudy® window

gudywindow is a double sided water-based mounting adhesive that can be applied to the face of a graphic and then face-mounted on interior windows.

Its 1 mil clear polyester carrier has a permanent adhesive on one side and a removable adhesive on the other side.

It allows bubble free application of posters to glass or clear acrylic panels with a simple hand squeegee. Perfect for store-front promotions.



Release Liner
Adhesive
Carrier
Adhesive
Release Liner

Siliconized Paper
Permanent Water-based Acrylic
Clear Polyester (1.0 mil)
Removable Acrylic
Embossed Low Density Polyethylene

Price Schedule								
Product no.	Size	Price	Sq.ft.		Product no.	Size	Price	Sq.ft.
62088	38" x 50 ft.	249.00	1.30		62085	61" x 100 ft.	479.00	.79
62081	38" x 100 ft.	296.00	.78		62086	61" x 200 ft.	917.00	.74
82088	51" x 50 ft.	249.00	.98					
62083	51" x 100 ft.	399.00	.78		62080	38" x 15 ft. (introductory)		32.00





SEAL PRINT SHIELD

ANTI-GRAFFITI LAMINATE FILM

Print Shield® Anti-Graffiti Wins Product of the Year at SGIA Expo

This product safeguards prints which may become vulnerable to graffiti by making them washable and resistant to a very large number of detergents and solvents. Print Shield consists of a high performance PCTFE film which protects images printed on UV or solvent inkjet printers from a wide variety of stains and chemicals such as paint, permanent marker, and acrylics

Key benefits include maintaining a long lasting professional look while being easy to clean with common economical cleaners. The PCTFE film measures only 1 mil and is completely stain, flame, and chemical resistant, as well as plasticizer and stabilizer free.

Print Shield offers the highest moisture barrier of any clear flexible film adding to the features that give it true protection against graffiti; unlike anything else in today's digital print and finishing market.

Applications include rigid indoor and outdoor displays, outdoor signage, wall murals, point of purchase/tradeshows displays, window graphics, and backlit signs. Designed to be used with inks that have long light-fastness, it is an extremely durable film with an estimated outdoor life of more than seven years (with non-immersed



[watch demo video here](#)

SELLING PRICES

SIZE	ITEM NO.	1-4 Rolls	5-9 Rolls	10 Rolls	
54" x 150 ft.	62276	1099.00 roll	1039.00 roll		
54" x 50 ft.	62270	555.00 roll	-		-
38" x 50 ft.	62272	399.00 roll	373.00 roll		-
38" x 15 ft. roll - #62271 - introductory offer - 35.00					

PRINT SHIELD® BASE TEXTURED MATTE LAMINATING FILM

Print Shield® Base Textured Matte

Print Shield Base Textured Matte is a cost effective, 3mil vinyl over-laminate specifically designed to offer outstanding protection against dirt, moisture and abrasion. Its fine sand texture gives it a semi-matte finish that will reduce glare from direct lighting, making it an excellent choice for brightly lit trade show graphics and roll up banner stand applications. Print Shield Base Textured Matte is suitable for both indoor & outdoor applications.

Print Shield Base Textured Matte		
Code	Size	Price per roll
83196	38" x 200 ft.	222.00 (.35 sq. ft.)
83197	51" x 200 ft.	296.00 (.35 sq. ft.)
83198	54" x 200 ft.	315.00 (.35 sq. ft.)
83195	38" x 15 ft. (introductory roll)	32.00

Digital Print Media Textile & Vinyl



Solvent	Eco-Solvent	UV	Latex	Dye Transfer	Dye Direct	Aqueous	Main Line	Product Description	Item Number	Core Size	width/inches	length/feet	W CM	Lenth in mtr.	Roll Price	Sq Ft Price
PURE COLOR																
							Pure Color	Golden Gate Fabric	6318002	3"	42	164	107	50	\$ 618.00	1.07
									6318003	3"	54	164	137	50	\$ 795.00	1.07
									6318004	3"	61	164	155	50	\$ 895.00	1.07
								100% polyester, light linen, 8 oz/yd2 (270 g/m2), meets NFPA 701, Indoor/Outdoor	6318005	3"	71	164	180	50	\$ 963.00	1.00
									6318006	3"	80	164	205	50	\$ 1094.00	1.01
									6318008	3"	98	164	250	50	\$ 1259.00	.96
									6318001	3"	20	10	50	3	\$ 40.35	-
							Pure Color	VersaFabric	6318032	3"	41	82	105	25	\$ 419.00	1.50
									6318033	3"	54	82	137	25	\$ 540.00	1.46
									6318034	3"	61	82	155	25	\$ 565.00	1.35
								100% polyester, tight dense weave, 7.1 oz/yd2 (260 g/m2), meets NFPA 701, Indoor/Outdoor	6318035	3"	80	164	205	50	\$ 1400.00	1.28
									6318036	3"	98	164	250	50	\$ 1695.00	1.25
									6318011	3"	20	10	50	3	\$ 40.25	-
							Pure Color	Monet Canvas 60% polyester / 40% cotton, heavy canvas weave, 10 oz/yd2 (340 g/m2), Indoor. Prominent tooth thatis ideal for art repro, POP, trade show signage.	6318022	3"	54	82	137	25	\$ 448.00	1.21
									6318023	3"	60	82	155	25	\$ 503.00	1.27
									6318021	3"	20	10	50	3	\$ 40.35	-
							Pure Color	Mambo Fabric 100% polyester, heavy linen weave, 9 oz/yd2 (290 g/m2), Indoor/Outdoor. Coating provides highest color brilliance and deepest, richest blacks. Displays have the look and feel of a fabric with depth.	6318044	3"	42	82	107	25	\$ 462.00	1.62
									6318042	3"	54	82	137	25	\$ 598.00	1.62
									6318043	3"	61	82	155	25	\$ 678.00	1.62
									6318041	3"	20	10	50	3	\$ 40.35	-
							Pure Color	Fresco AdTex	6318058	3"	24	100	61	30.5	\$ 229.00	1.14
									6318057	3"	36	100	91	30.5	\$ 342.00	1.14
								100% polyester, tight dense weave, 4.9 oz/yd2 (139 g/m2),Specially removable pressure sensitive adhesive, Indoor	6318056	3"	54	100	137	30.5	\$ 491.00	1.09
									6318055	3"	60	100	155	30.5	\$ 546.00	1.09
									6318054	3"	20	10	50	3	\$ 39.00	-
							Pure Color	Apollo Flag - Paper Backed	6023891	3"	42	100	107	30.5	\$ 481.00	1.37
									6023892	3"	54	100	137	30.5	\$ 575.00	1.28
								100% polyester, light knit weave, 3.24 oz/yd2 (110 g/m2), Indoor/Outdoor	6023893	3"	64	100	155	30.5	\$ 680.00	1.28
									6023890	3"	20	10	50	3	\$ 40.35	-

INDISPLAY - PANEL PRODUCTS																
							SolvoPrint	SolvoPrint Easy Panel 310	6026982	3"	36	65	91	20	\$ 290.00	\$ 1.48
								Rigid PVC, 12mil, Indoor and short-term outdoor, NFPA701, B1	6026983	3"	42	65	107	20	\$ 339.00	\$ 1.49
									60070	3"	30	10	76	3	\$ 40.35	\$ -
							SolvoPrint	SolvoPrint Easy Panel 430	6026980	3"	36	65	91	20	\$ 386.00	\$ 1.98
								Rigid PVC, 17mil, Indoor and short-term outdoor, NFPA701, B1	6026981	3"	42	65	107	20	\$ 448.00	\$ 1.97
									60071	3"	30	10	76	3	\$ 40.35	\$ -
							SolvoPrint	SolvoPrint Nolite 165	6031864	3"	36	98	91	30	\$ 271.00	\$.92
								Polyester co-extruded with light block layer, 6.5mil, Indoor and short-term outdoor	6031865	3"	42	98	107	30	\$ 319.00	\$.92
									60129	3"	30	10	76	3	\$ 40.35	\$ -
							SolvoPrint	SolvoPrint Nolite 175 Polyester co-extruded w/light block layer. 7 mil. indoor & short term outdoor	6029152	3"	36	98	91	30	\$ 478.00	\$ 1.63
									60120	3"	30	10	76	3	\$ 40.35	\$ -
							SolvoPrint	SolvoPrint Nolite 360	6031860	3"	36	66	91	20	\$ 329.00	\$ 1.67
								Polyester co-extruded with light block layer, 14 mil, Indoor and short-term	6031862	3"	60	66	152	20	\$ 548.00	\$ 1.66
									60128	3"	30	10	76	3	\$ 40.35	\$ -
							Seal	SolvoPrint CityLight Superior	6031870	3"	36	98			\$ 243.00	\$.82
								100%polyester, 8.3mil, front printable, Back-lit, Translucent, Matte finish.	6031868	3"	50	98			\$ 327.00	\$.80
								For use w/ solvent, eco-solvent, latex, & UV curable inks. For indoor & outdoor use, in a variety of light box and signage applications	6031869	3"	60	98			\$ 389.00	\$.80
									6031866	3"	25	10			\$ 40.35	\$ -
							SolvoPrint	SolvoPrint Gotham PVC Blockout	6081441	3"	38	131	97	40	\$ 268.00	\$.65
									6081442	3"	54	131	107	40	\$ 387.00	\$.66
								100% polyester with PVC laminated both sides, 13 oz/yd2 (440 g/m2), 1 yr Indoor/Outdoor	6081443	3"	63	131	160	40	\$ 435.00	\$.64
									60116	3"	30	20	76	6	\$ 40.35	\$ -

[click here for product specs & info.](#)

Digital Print Media - Textile & Vinyl



Solvent	Eco-Solvent	UV	Latex	Dye Transfer	Dye Direct	Aqueous	Main Line	Product Description	Item Number	Core Size	L W IN Ft	ROLL PRICE	Sq Ft Price	
DIGITAL PRINT MEDIA - PRESSURE SENSITIVE VINYL														
							SolvoPrint	MightyGrip Matte White Removable Adhesive	62753	3"	54 150	\$ 228.00	.34	click for: product info sheet product tech sheet
								Calendered-monomeric PVC, matte, 3.5mil, >96% opacity, 3 to 4 year outdoor durability.	62754	3"	60 150	\$ 256.00	.34	
									62750	3"	30 10	\$ 40.35	-	
							SolvoPrint	MightyGrip Matte White Permanent Adhesive	62903	3"	54 150	\$ 228.00	.34	product info sheet product tech sheet
								Calendered-monomeric PVC, matte, 3.5mil, >96% opacity, 3 to 4 year outdoor durability.	62904	3"	60 150	\$ 256.00	.34	
									62900	3"	30 10	\$ 40.35	-	
							SolvoPrint	MightyGrip Gloss White Removable Adhesive	62765	3"	36 50	\$ 123.00	\$ 0.83	product info sheet product tech sheet
								Calendered-monomeric PVC, gloss, 3.5mil, >96% opacity, 3 to 4 year outdoor durability.	62762	3"	54 50	\$ 136.00	\$ 0.60	
									62763	3"	54 150	\$ 228.00	\$ 0.34	
									62764	3"	60 150	\$ 256.00	\$ 0.34	
									62760	3"	30 10	\$ 40.35	-	
							SolvoPrint	MightyGrip Gloss White Permanent Adhesive	62893	3"	54 150	\$ 228.00	.34	product info sheet product tech sheet
								Calendered-monomeric PVC, matte, 3.5mil, >96% opacity, 3 to 4 year outdoor durability.	62894	3"	60 150	\$ 256.00	.34	
									62890	3"	30 10	\$ 40.35	-	
							SolvoPrint	MightyGrip Matte White Permanent Grey	62943	3"	54 150	\$ 228.00	.34	product info sheet product tech sheet
								Calendered-monomeric PVC, gloss, 3.5mil, >99% opacity, 3 to 4 year outdoor durability.	62944	3"	60 150	\$ 256.00	.34	
									62940	3"	30 10	\$ 40.35	-	
							SolvoPrint	MightyGrip Gloss White Permanent Grey	62935	3"	36 50	\$ 123.00	\$ 0.83	product info sheet product tech sheet
								Calendered-monomeric PVC, gloss, 3.5mil, >99% opacity, 3 to 4 year outdoor	62892	3"	54 50	\$ 136.00	\$ 0.60	
									62933	3"	54 150	\$ 228.00	\$ 0.34	
									62934	3"	60 150	\$ 256.00	\$ 0.34	
									62930	3"	30 10	\$ 40.35	-	
							SolvoPrint	WallGrip - Removable Adhesive	62907	3"	54 150	\$ 450.00	\$ 0.68	product info sheet product tech sheet
								Polymeric Plasticized Opaque White Matte PVC, 6mil, 99% opacity, indoor applications	62908	3"	27 23	\$ 66.00	-	
							SolvoPrint	ClearGrip - Glass Removable Adhesive	62975	3"	30 150	\$ 218.00	\$ 0.59	product info sheet product tech sheet
								Clear Calendered Matte PVC	62977	3"	54 150	\$ 395.00	\$ 0.59	
								3.2 mil Re-moveable and Re-Positionable	62978	3"	30 10	\$ 40.35	-	
							SolvoPrint	Easy Dot - Matte White Removable	6030349	3"	54 164	\$ 419.00	\$ 0.57	product info sheet product tech sheet
								Calendered-monomeric PVC, 4mil, 94% opacity	6033675	6"	55 820	\$ 1900.00	\$ 0.53	
								1 year outdoor durability	60140	3"	27 10	\$ 40.35	-	
							SolvoPrint	Easy Dot-Clear Removable(frosted translucent)	6032517	3"	54 164	\$ 419.00	\$ 0.57	product info sheet product tech sheet
								Calendered-monomeric, 4mil, opacity N/A	6033676	6"	55 820	\$ 1900.00	\$ 0.53	
								1 year outdoor durability	60141	3"	27 10	\$ 40.35	-	

DIGITAL PRINT MEDIA - ULTRACLEAR

Seal	UltraClear PET - 4.9 mil polyester film	6034241	3"	50"x 98 ft.	525.00\$	1.28
	Ultra clear silicone adhesive, repositionable & removable. Optically Clear.	6034240	3"	25"x 10 ft.	40.35	-

[Click here for product info and specs on ULTRACLEAR](#)

ACCESSORIES - DISPLAYS

BANNER STANDS				
ROLL-UP DELUXE	The ROLL-UP DELUXE is our top of the line banner stand with several key features, making it a superior stand for retail, POP, & trade show graphics. For picture & details click here.	4001269	PANEL SIZE 33"x 83.86"	104.00ea.
L-BANNER	The L-Banner has a solid, weighted foot and sturdy support pole. The support pole screws in and holds tight for added stability. Panel profiles clamp securely without adhesive and the pole attaches behind the profile providing a clean, elegant look. Carrying case is equipped with a PVC inner core, providing maximum durability and protection for your stand and graphic.	4001274	PANEL SIZE 33.46" x 77.95"	\$49.00 ea
		4001275	PANEL SIZE 39.37 x 77.95"	\$56.00 ea
ROLL-UP	The Roll-Up Banner, reinforced fitting for the pole to ensure the display stands straight. Clamping top panel profile. Improved pole attachment (no hook). The included carrying bag unzips lengthwise for greater ease and has extra padding over its entire length to ensure the display stays looking great.	4001270	PANEL SIZE 33.46" x 86.61"	\$54.50 ea
		4001271	39.37" x 86.61"	\$69.50 ea

New! New!
Seal's latest and top of the line banner stand

Look at these features :-

Telescopes from 63" to 86.6"

Storage inside the base for:

- the pole and top bar
- and a knob to adjust tension on the graphic

Top panel profile clamps your media securely without need for adhesive strips.

Pole attaches to top panel from behind with no unsightly hook hanging on top of your graphic.

Complete with carrying bag.






Price - 104.00 ea.



Specifications			
Item #		Color	Weight
4001269		Silver	10 lbs

Panel Guide	
Panel Size	Visible Height
33 x 83.86 in	33 x 78.74 in

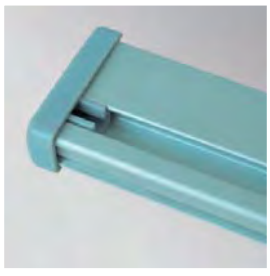
-  assembled in 30 seconds
-  includes carrying case
-  easy to transport

ROLL-UP BANNER

The **Roll-Up Banner** is a cost effective system for short term signage or promotions. It is designed with a reinforced fitting for the pole to ensure the display stands straight - no tilting or leaning.




The top panel profile clamps the media securely in place without the need for adhesive strips and the pole attaches to the top panel from behind with no unsightly hook hanging on top of the graphic.

The included carrying bag unzips lengthwise for greater ease and has extra padding over its entire length to ensure the display stays looking great.



Specifications				
Item #	Width	PRICES	Color	Weight
4001270	33 in	54.50 ea.	Silver	6.8 lbs
4001271	39 in	69.50 ea.	Silver	7.7 lbs

Panel Guide	
Panel Size	Visible Size
33.46 x 86.61 in	33.46 x 79.92 in
39.37 x 86.61 in	39.37 x 79.92 in

-  assembled in 30 seconds
-  incl. carrying case
-  easy to transport

