

## IMAGin® Intermediate - Solvent-based, UV Cured Ink Jet Media

For ICC Profiles – Visit MACtac Website at [www.mactac.com](http://www.mactac.com)

IMAGin®  
by MACtac®



Application: Indoor Advertising  
Material: IMAGin 5828R



Application: Outdoor Signage  
Material: IMAGin JT5829P



Application: Outdoor Signage  
Material: IMAGin® JT5829R

JT5800 Series is part of the Viacom endorsed offerings for outdoor advertising.

### MATTE WHITE PERMANENT



JT5828P is a 3.7-mil matte white, soft calendered PVC film designed for solvent-based ink jet printing.

This product is coated on one side with permanent, opaque, acrylic pressure sensitive adhesive and supplied with an 86# Kraft liner.

JT5828P is designed for medium-term, indoor and outdoor advertising and promotion on flat or slightly curved surfaces.

54" x 164 feet 359.00

### MATTE WHITE REMOVABLE



JT5828R is a 3.7-mil matte white, soft calendered PVC film designed for solvent-based ink jet printing.

JT5828R is coated on one side with removable, opaque, acrylic pressure sensitive adhesive and supplied with an 86# Kraft liner.

JT5828R is designed for medium-term, indoor and outdoor advertising and promotion on flat or slightly curved surfaces.

54" x 164 feet 373.00

### GLOSS WHITE PERMANENT



JT5829P is a 3.7-mil gloss white, soft calendered PVC film designed for solvent-based ink jet printing.

The product is coated on one side with permanent, opaque, acrylic pressure sensitive adhesive and supplied with an 86# Kraft liner.

JT5829P is designed for medium-term, indoor and outdoor advertising and promotion applications on flat or slightly curved surfaces.

54" x 164 feet 359.00

### GLOSS WHITE REMOVABLE



JT5829R is a 3.7-mil gloss white, soft calendered PVC film designed for solvent-based ink jet printing.

The product is coated on one side with removable, opaque, acrylic pressure sensitive adhesive and supplied with an 86# Kraft liner.

JT5829R is designed for medium-term, outdoor advertising and promotion on flat or slightly curved surfaces.

54" x 164 feet 373.00

## wallNOODLE<sup>™</sup>

SHORT TERM WALL MEDIA



Application: Wall Graphics  
Material: wallNOODLE<sup>™</sup>



**WN628** is a 6.0-mil matte white, semi-rigid calendered PVC film designed for UV screen, and solvent-based ink jet printing. The product is coated on one side with a removable and repositionable acrylic pressure sensitive adhesive and supplied with a 90# SuperFlat<sup>™</sup> liner. WN628 is designed for short term (6 months to one year) indoor wall graphics on smooth, flat surfaces.

### Features and Benefits:

- 6.0-Mil matte white semi-rigid facestock
- Easily applied and removed from most interior wall surfaces
- Reusable
- Matte facestock provides superior printability
- Available on 6" cores

### Typical Uses:

- Short term (six months to one year) indoor wall graphics
- Designed for smooth, flat surfaces

[CLICK HERE FOR MATERIAL SPECS AND PRODUCT APPLICATION](#)

Physical Properties	Typical Values
<b>Peel Adhesion</b> , lb./in. (N/25 mm) 180° on Stainless Steel - 24 hr	<b>0.85</b>
<b>Quick Tack on SS</b> , lb./in <sup>2</sup> (N/25mm)	<b>0.80</b>
<b>Dimensional Stability (shrinkage)</b> , % 48 hours @ 158°F (70°C)	MD <b>0.40</b> CD <b>0.20</b>
<b>Temperature Ranges</b> Minimum Application: End Use:	<b>50°F (+10°C)</b> <b>-20° to 158°F</b> (-6° to 70°C)
<b>Shelf Life:</b>	Two years from D.O.M when stored at 60/77°F (15-25°C) and 50% relative humidity in the original packaging.

### PRICE

Size: 54" x 100 Ft. 355.00 per Roll (.76 sq. ft.)

## ROODLE<sup>™</sup>



Application: Wall Graphics  
Material: ROODLE<sup>™</sup>



**ROODLE<sup>™</sup> RO628** is a 6 mil matte white vinyl designed for solvent, eco-solvent, latex, and UV wide format, as well as for screen printing. Designed for tileable wall graphics, posters, decals and bumper stickers, RO628 is supplied on a 90# SuperFlat<sup>™</sup> polycoated release liner for moisture stability regardless of print method.

### Features and Benefits:

- ROODLE meets the flame spread and smoke density specifications for ANSI/NFPA – Class A and IBC – Class A.
- Thick face makes ROODLE easy to install, even without a laminate
- Removable for up to 2 years from most well maintained substrates

### Typical Uses:

- Wall murals
- Decals
- Point of purchase displays

### Use with:

- PERMACOLOR<sup>®</sup> ColorGard<sup>™</sup> CG8000 Series
- PG7000 Series

[click here for material specs and product application](#)

Physical Properties	Typical Values
<b>Peel Adhesion</b> , lb./in. (N/25 mm) 180° on Stainless Steel - 24 hr	<b>1.5</b>
<b>Quick Tack on SS</b> , lb./in <sup>2</sup> (N/25mm)	<b>2.1</b>
<b>Dimensional Stability (shrinkage)</b> , % 48 hours @ 158°F (70°C)	<b>.04</b>
<b>Temperature Ranges</b> Minimum Application: End Use:	<b>50°F (+10°C)</b> <b>-20° to 158°F</b> (-6° to 70°C)
<b>Shelf Life:</b>	Two years from D.O.M when stored at 60/77°F (15-25°C) and 50% relative humidity in the original packaging.

### PRICE

Size: 54" x 100 Ft. 319.00 per roll (.71 sq. ft.)



## Intermediate - Solvent-based, UV Cured Ink Jet Media

### StreetRap™

CONCRETE FLOOR GRAPHICS



**Application:** Concrete Graphic  
**Material:** StreetRap



**StreetRap** is a 3.2-mil matte white vinyl with an aggressive high tack adhesive. It's designed for short term application to unsealed, indoor or outdoor, pedestrian concrete or asphalt surfaces or selected smooth to slightly rough wall surfaces.

#### Features and Benefits:

- Great adhesion to unsealed concrete or asphalt surfaces
- Eco-solvent, solvent, UV ink jet and screen printable
- Matte facestock provides superior printability

#### Typical Uses:

- Retail outlets
- Trade shows
- Sports venues
- Convention Centers
- Parades

**Note:** Must be overlaminated. Use Permacolor IP6200 Series.

Physical Properties	Typical Values
<b>Peel Adhesion, lb./in. (N/25 mm)</b> 180° on Stainless Steel - 30 min - 24 min - 3 days	7.0 8.0
<b>Quick Tack on SS, lb./in<sup>2</sup> (N/25mm)</b>	7.5
<b>Dimensional Stability (shrinkage), %</b> 48 hours @ 158°F (70°C)	max 0.5
<b>Temperature Ranges</b> Minimum Application: End Use:	50°F (+10°C) -50° to 225°F (-45° to 107°C)
<b>Shelf Life:</b> Two years from D.O.M when stored at 60/77°F (15/25°C) and 50% relative humidity in the original packaging.	

#### StreetRap PRICE

Item	Size	Price per roll	Sq. Ft.
STR328L100	54" x 100 ft.	741.00	1.58

Laminate: - IP 6202 slip resistant 5mil textured lustre finish - polycarbonate - 51"x 150ft. - 1079.00 (1.70sq)

## High-Performance - Solvent-based, UV Cured Ink Jet Media

### RoughRAP™

WALL WRAP GRAPHICS



**Application:** Wall Graphics  
**Material:** IMAGin® Digital Media for Wall Wraps



**WW100** is a 2.1-mil soft white gloss, highly conformable PVC film designed for solvent-based ink jet printing. The product is coated on one side with a high tack, permanent, opaque acrylic adhesive. WW100 is specifically designed for direct application onto exterior and interior brick walls for an astonishing visual effect! Use of an overlaminate will extend the life of the graphic and allow for easier handling during installation.

#### Features and Benefits:

- 2.1-mil highly conformable vinyl face
- High tack, permanent adhesive
- 80# polycoated liner for excellent printability and layflat
- Superior print quality for vibrant images

#### Typical Uses:

- Exterior and Interior Brick walls

#### Use with:

- PERMACOLOR® RAYZor™ - page 25

Physical Properties	Typical Values
<b>Peel Adhesion, lb./in. (N/25 mm)</b> 180° on Stainless Steel - 24 min	3.2-5.0 (14-22)
<b>Quick Tack on SS, lb./in<sup>2</sup> (N/25mm)</b>	4.8-6.2 (21-27)
<b>Dimensional Stability (shrinkage), %</b> 48 hours @ 158°F (70°C)	max 0.5
<b>Temperature Ranges</b> Minimum Application: End Use:	50°F (+10°C) -4° to 160°F (-20° to 70°C)
<b>Shelf Life:</b> Two years from D.O.M when stored at 60/77°F (15-25°C) and 50% relative humidity in the original packaging.	

#### PRICE

Size: - 54" x 75 ft.	- 565.00 per roll	(1.67 sq. ft.)
54" x 150 ft.	- 1110.00 per roll	(1.64 sq. ft.)

[CLICK HERE FOR PRODUCT INFO & SPECS.](#)



**Application:** Wall Graphics  
**Material:** IMAGin® Digital Media for Wall Wraps

# REFLECTIVE VINYL



## MACtac® REFLECTIVE



**REFLECTIVE**

### Features and uses:

- Easy to cut and weed.
- Vehicle markings.
- Very flexible and can be applied over rivets and corrugated surfaces.

**5700** is a flexible reflective film (Engineering Grade) providing wide-angle reflectivity of incident light and giving excellent night and day visibility. The face is made with a layer of microscopic glass beads of a high optical quality. These are embedded into a colored film, which then act as a lens. A metallized back provides the mirrored surface for reflection. The film is coated with a **white, high strength, permanent, acrylic adhesive**. A 92# white polycoated paper liner offers stability and excellent layflat qualities.



**COLOURS:** 5729 White 5759 Red  
 5789 Black 5739-0 Light Blue  
 5709 Yellow 5739-1 Dark Blue  
 5701 Orange 5749 Green

[click here to see color card](#)

WIDTH	PRICE PER YARD			
	1-9 YDS	10-49 YDS	50 YDS	ROLL
24"	23.95	20.95	18.95	947.00
48"	46.45	40.85	37.80	1850.00

## Scotchlite™ 3M

**3M # 3200 ENGINEERING GRADE - 7 YEAR - PERFORATED - INTERIOR/EXTERIOR APPLICATION** - 3200 Engineering reflective vinyl is manufactured for use on flat surfaces such as sign boards and directional signage. It is not recommended for vehicular graphics.

Colours: White, Red, Blue, Yellow, Orange and Green.

[click here to see color card](#)

WIDTH	PRICE PER YARD		
	1-9 YDS	10 YDS	50 YDS (Roll)
White - 24" Non Punched	18.00	16.50	15.30 (765.00)
Colours - 24" Non Punched	18.75	17.00	15.70 (780.00)

## KIWA REFLECTIVE - TRANSPORTATION GRADE

- Fleet grade 5.5 mil premium cast reflective film
- 7 year outdoor durability meets OEM specs.
- Formulated for computer cut applications
- Designed for flat, corrugated, and irregular surfaces including rivets, with superior conforming characteristics
- Excellent results in screen and thermal printing applications

**COLOURS:** 17013 White 17033 Lemon Yellow 17043 Yellow 17053 Orange  
 17063 Red 17163 Dark Red 17183 Light Blue 17083 Blue  
 17073 Green 17093 Black

[click here to see color chart](#)

WIDTH	PRICE PER YARD		
	1-9 YDS	10 YDS	50 YDS
15" Punched	22.60	17.85	15.50
20" Non Punched	33.60	27.25	22.50
24" Non Punched	35.70	28.85	24.95
30" Non Punched	44.00	32.65	30.45
48" Non Punched	67.00	55.60	45.00



### HV 1200 High Visibility Reflective

The industry's broadest line of high-performance reflective vinyl films in 17 colors.

Film Type	Glass bead retroreflective
Adhesive	Permanent
Liner	StaFlat™
Conformability	Rivets/corrugations, compound curves
Converting	CAS, screen print, thermal transfer
Durability	Up to 7 years

- HV 1200-101-R White F
- HV 1200-190-R Black
- HV 1200-212-R New Gold
- HV 1200-215-R Gold
- HV 1200-235-R Yellow
- HV 1200-360-R Orange
- HV 1200-425-R Tomato Red
- HV 1200-440-R Red
- HV 1200-450-R Dark Red
- HV 1200-470-R Burgundy
- HV 1200-565-R Purple
- HV 1200-630-R Olympic Blue
- HV 1200-640-R Light Blue
- HV 1200-688-R Blue
- HV 1200-770-R Kelly Green
- HV 1200-778-R Green
- HV 1200-995-R Brown

[click here to see color card](#)

## AVERY REFLECTIVE



### HV 1200 HIGH VISIBILITY

The industry's most comprehensive line of high performance reflective vinyl films in 17 colors.

Formerly A7 Series

WIDTH	PRICE PER YARD		
	1-9 YDS	10 YDS	50 YDS
15" white & colors	26.95	24.30	21.95
24" white & colors	42.90	38.70	34.85
30" white	51.25	46.50	43.55
48" white	79.70	74.00	69.70





MACtac®  
Performance Graphics



# Intermediate Vinyl

Typical Uses:

- Promotional signage (flat surface) 24"
- Window graphics
- Banners
- Display graphics

Color Card Available



**8300PRO** is a high-gloss intermediate film and is the workhorse of MACtac's computer-aided signage vinyls. Built to last up to five years, MACmark 8300PRO delivers a wide range of messages on a wide variety of substrates.

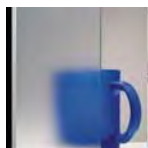
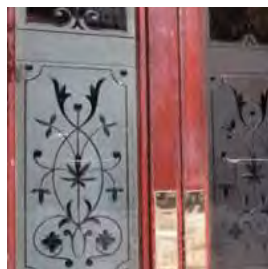
WIDTH	PRICE PER YARD		
	1-9 YDS	10-55 YDS	55 YDS (ROLL)
24"	Min. 10 yds	3.35	2.90
48"	7.50	6.95	5.45
60"	9.15	8.15	7.25

## MACmark® High-Performance Marking Films

# Glass Decor

Typical Uses:

- Frosted window decoration, to simulate an etched glass or sandblasting look.



**Glass Decor 700** series films are translucent, non-coloured vinyls with "dusted" and "frosted" finishes for decoration of glass windows, mirrors or doors for an etched, frosted or sandblasted look. The face is a translucent matte 3-mil cadmium-free vinyl. The film is coated with a durable permanent acrylic adhesive with excellent wet out characteristics for clarity. An 83# white Kraft liner offers stability and layflat. The product has good dimensional stability and is designed for excellent cutting and weedability.

(Specify Frosted or Dusted)

WIDTH	PRICE PER YARD		
	1-9 YDS	10-55 YDS	55 YD ROLL
24"	12.25	10.75	9.75
48"	19.95	18.95	17.95
60"	25.75	24.75	22.50

## MACmark® Specialty Marking Films

# Fluorescent

Typical Uses:

- Short term promotional use on windows, display panels or exhibit walls.



**6800** Short-term promotional fluorescent vinyl designed for 3-6 month outdoor use. Available in five bright fluorescent colors, the film is coated with removable acrylic adhesive designed for clean removability.

WIDTH	PRICE PER YARD		
	1-9 YDS	10-55 YDS	55 YD ROLL
24"	14.95	13.95	11.95
48"	26.25	24.75	22.95

## MACmark® Specialty Marking Films

# Transparent

Typical Uses:

- Window graphics
- Stained glass effect
- Art



**8400** is a glossy transparent film with up to three years outdoor durability. This 3-mil cadmium free vinyl is available in ten bright, consistent, transparent colors, which can be further combined to create nearly any colour imaginable. The film is coated with a durable, permanent acrylic, pressure sensitive adhesive with excellent stability, layflat and is designed for excellent cutting and weedability.

WIDTH	PRICE PER YARD		
	1-9 YDS	10-55 YDS	55 YD ROLL
24"	Min. 10 yards	8.65	7.25
48"	16.95	14.95	12.85

MACMARK FILMS