

ACM - ALUMINUM COMPOSITE MATERIAL - white, black, & colors
 INEXPENSIVE - LIGHTWEIGHT - HIGH STRENGTH Available in -

- white/white
black/black
yellow/white
red/white
white/mill
blue/white
brushed chrome/white

Aluminum Clad Sign Panels

5 sheets less 10% - 10 sheets less 15%

3mm - 48"x 96" (4x8 ft. ALUMINUM CLAD PANEL)	
3mm gloss white both sides	85.00ea.
3mm matte white 1 side / mill finish other side	63.00
3mm gloss black both sides	88.00
3mm gloss color (yellow, red or blue) 1 side gloss white	88.00
3mm brush chrome 1 side / gloss white other side	103.00
6mm 48"x 96" (4x8ft.)	
6mm gloss white both sides	141.00
6mm gloss black both sides	159.00
3mm & 6mm - 48"x 120" (4x10 ft.)	
3mm gloss white both sides	103.00
3mm matte white 1 side / mill finish other side	79.00
6mm gloss white both sides	239.00



10 mil white aluminum clad panel
 10mm (1/2") 4 ft. x 8 ft.
 An exceptionally strong aluminum composite panel with a high density poly core that will not swell, rot, corrode, or delaminate under prolonged water exposure. Both faces are baked gloss white to not crack, chip, bake, or peel. Average outdoor life of 10 years when installed properly.
229.00 ea

COROPLAST®

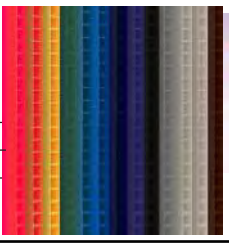
Coroplast is an extruded, twin-wall plastic sheet based on a high-impact polypropylene copolymer. This high quality, polypropylene profile sheet is formulated specifically for screen printing, displays and packaging. It uses a copolymer resin to increase impact and low temperature performance while retaining flexibility.

At regular temperatures most oils, solvents, and water have no effect on Coroplast, allowing it to perform under adverse weather conditions or when exposed to harsh chemicals.

Standard colours: White, Natural, Ivory, Yellow, Brown, Red, Orange, Light Blue, Dark Blue, Navy Blue, Silver Grey, Green and Black.

48" x 96" sheets can be assorted for quantity discount columns

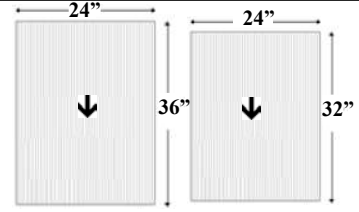
4' X 8' sheets	1-9	10-24	25
White - 4mm (3/16 in.)	15.95	15.15	14.15
Colours - 4mm (3/16)	19.95	18.95	17.95
White - 6mm (1/4 in.)	36.95	33.95	
White - 10mm (7/16 in.)	47.50	43.70	
Black - 10mm (7/16 in.)	54.85	49.95	
White - 4mm - Ultra Smooth	20.35	18.50	



BLANKS-4MM COROPLAST

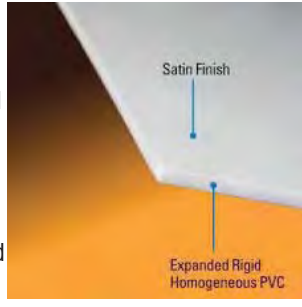
SIZE	PRICE
24" x 18"	2.15 ea.
24" x 32"	3.55 ea.
24" x 36"	4.25 ea.

CHECK FOR PRICING ON OTHER SIZES



SINTRA

FLAME RETARDANT BOARD is a rigid and strong light-weight foamed P.V.C. board which meets fire code regulations. Sold in 4' x 8' sheets. Colours: Red, Blue, Green, Yellow, Light Grey, Grey, Beige, Black. Sintra material is closed-cell, expanded plastic, high-density polyvinylchloride sheet.



SINTRA PVC BOARD

THICKNESS	WHITE	BLACK	COLOURS
3 mm (1/8")	37.25	42.95	55.00
6 mm (1/4")	76.85	78.95	96.75
13 mm (1/2")	139.00	159.00	----
19 mm (3/4")	199.00	----	----
25 mm (1")	325.00	----	----

CREZON® BOARD

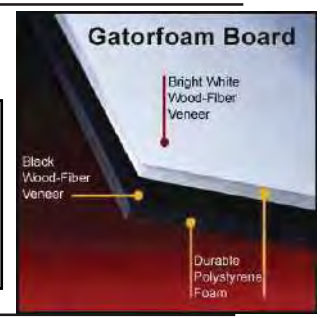
4 ft. x 8 ft.
 1/2 inch thick
 Primed 1 side only
 2 year exterior
\$120.00 sheet

GATORFOAM®

Both Natural and White Gatorfoam panels are amazingly strong and light-weight. You can use them on a multitude of creative projects, ranging from complex theatre sets to simple photo mounts. And, because they are resistant to sun, wind and rain, both can be used indoors and out. Sold in 4' x 8' sheets.

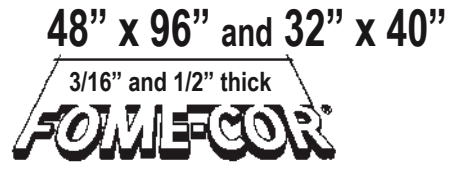


THICKNESS	WHITE	NATURAL	BLACK
5 mm (3/16")	67.50	72.00	79.50
13mm (1/2")	116.00	118.00	120.00
19mm (3/4")	139.00	143.00	153.00
25mm (1")	166.00	169.00	169.00



FOME-CORE BOARD

The well known light weight display material. Excellent for signs and displays. Lightweight & rigid. Sizes 48"x96" and 32" x 40" sheets sold singularly or (25 per carton)



SIZE	COLOR	Part Case	Full Case Price
48"x96"-3/16"	WHITE	16.00ea.	case (25) 13.00ea.
48"x96"-3/16"	BLACK	20.00ea.	" " 16.70ea.
32"x40"-3/16"	WHITE	6.25ea.	" " 5.55ea.
32"x40"-3/16"	BLACK	7.65ea.	" " 6.85ea.
48"x96"- 1/2"	WHITE	29.00ea.	case 12) 25.00ea.
48"x96"- 1.2"	BLACK	41.00ea.	" " 37.00ea.