



LETTERING QUILLS

MACK

SCHARFF

Lettering Quills **Graduated Series Extra-Fine Quality**

Grey Quills

GREY Talaoutky squirrel lettering quills with attached handles are designed for use in enamels and heavier colours. Finest selected grey squirrel hair. Set in special quills to a thin straight even edge, wire-bound, and attached on wood handles with rounded ends. Stronger and longer than brown squirrel

Brown Quills

BROWN Kazan quill lettering quills with attached handles are designed for enamel and oil colors on plastic and other smooth services. Finest selected brown French squirrel hair. Set in special quills to a thin straight even edge. Wire bound and attached on wood handles with rounded ends.



Grey - Series 189L - Black Handles

SIZE	PRICE
0	\$12.95
1	13.70
2	14.25
3	15.15
4	16.45
5	17.90
6	20.95
7	21.90

SIZE	PRICE
8	\$23.50
9	27.60
10	35.45
12	40.30
14	44.40
16	48.65
18	51.85
20	58.25

Brush Cleaning and Care

Always clean out a brush thoroughly after use. The general rule for cleaning: the solvent or thinner that goes with the paint being used, becomes the cleaning agent. If the paint or medium you are using is compatible with mineral spirits, it is suggested using this as a cleaning agent.

When brush is cleaned, carefully wipe the hair without pulling. Storing the brush greased with light oil prevents any residual paint from drying on the brush.

Do not allow cleaning agent to get into the glued part of the brush, some cleaning agents can attack the glue and cause the hair to loosen.



Brown Series 179L

Finest Brown Squirrel Hair - Natural Quill - Red Handles



SIZE	PRICE
0	\$12.65
1	12.95
2	13.15
3	13.75
4	14.65
5	15.15
6	17.95
7	18.95
8	19.95
9	21.25

SIZE	PRICE
10	27.25
12	31.95
14	33.95
16	36.90
18	38.85
20	41.50
22	44.00
24	48.00
26	53.00

Brush Conditioner & Cleaner #4004

Created specifically for cleaning and storing brushes which have been used with oil based paints.

Quarts: \$19.35



Brush Boxes



\$41.95

5"x14" Brush Box #62 brushes are held in place with 3 steel spring coils

all aluminum
Protects your brushes while drying, storing, & transporting



\$27.95

5"x 6 1/2" Box#31 specifically designed for pinstriping brushes. Brushes held in place with one steel spring coil

Scharff Quills

Mfg. in France



Long recognized as one of the highest quality sign quills ever made. Scharff Series 2000 Round Grey-Line Quills have graduated hair length and are all lightweight for good control. They are excellent for lettering on smooth, glassy surfaces; with enamels, oils, Japans, synthetics and other like colours. The choicest Grey Talaoutky Squirrel hair is attached with non-corrosive brass wire and in plastic ferrules.

Series 2000 Round Grey-Line Quills

SIZE	PRICE
0	\$24.50
1	25.95
2	26.75
3	27.50
4	28.50
5	29.60
6	32.30
7	33.75

SIZE	PRICE
8	\$35.75
9	37.70
10	42.80
12	48.75
14	54.75
16	59.80
18	65.75
20	72.85

FLAT ONE-STROKE BRUSHES



MACK JET STROKE SERIES 1962

One of the most popular sign lettering brush ever produced. It's ideal for paper, muslin, and board signs. Used extensively for truck lettering. Finest Camel-Oxhair, seamless nickel ferrules with brown handles.



SIZE	PRICE
1/8"	\$5.85
1/4"	8.65
3/8"	10.85
1/2"	14.35
3/4"	24.35
1"	30.30
1 1/4"	49.45
1 1/2"	54.95

Lettering-One Stroke Signwriters - Mack Series 160

(REPLACES LANGNICKEL 6076)

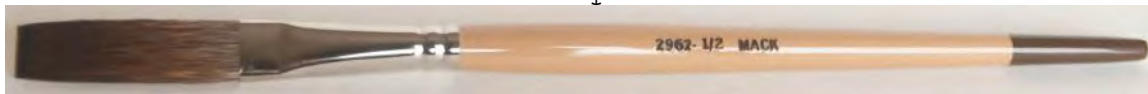
This is a stroke or lettering brush that is normally used for bigger show card and lettering work. The brush is suitable for most any surface. Because of the sable hair in the brush, it has a lot of snap and makes a nice straight razor edge. It is made with sabeline hair and has a flat ferrule.



Sizes	1/8"	1/4"	1/2"	3/4"	1"
Hair Length	11/16"	13/16"	1 1/16"	1 1/4"	1 1/2"
Prices	5.50	7.60	11.50	18.95	26.40

Mack Series 2962 One-Stroke

- * Approximately 50% Brown Taklon & 50% Pure Kazan Squirrel.
- * Our preferred mixtures for water base & acrylic paint. Also used for enamels.



Sizes	1/8"	1/4"	3/8"	1/2"	5/8"	3/4"	1"
Hair Length	1 1/8"	1 1/4"	1 3/8"	1 1/2"	1 5/8"	1 3/4"	1 7/8"
Prices	6.60	7.95	9.85	12.15	14.25	20.50	32.95

(replaces Langnickel 226 One Stroke)



Mack Series 2179

Lettering Brush

50% pure squirrel & 50% Taklon

Sizes	0	1	2	4	5	6	8	10	12
Hair Length	11/16"	3/4"	7/8"	1"	1-1/16"	1-1/8"	1-3/16"	1-5/16"	1-3/8"
Prices	7.35	7.45	7.95	8.75	9.45	10.95	12.35	13.00	16.50

(replaces Nocturna 6056 Lettering Brush)



Mack Series 818 Red Sable Lettering & Showcard Brush

Red sable is more flexible and durable than squirrel. After painting it returns easily to its initial shape. The shorter hair length gives more control. However, red sable is not as soft as squirrel and will not carry as much paint.

Sizes	2	4	6	8	10	12	14	16
Hair Length	21/32"	3/4"	7/8"	1-5/16"	1"	1-1/8"	13/16"	1-1/4"
Prices	10.45	11.00	13.75	15.60	18.85	23.75	35.50	45.00

(replaces Langnickel 65S Showcard Brush)

BRUSHES FOR PINSTRIPING, DESIGN & SCROLL WORK



Series 20 - North America's No. 1 Automotive Touch-Up Brush

Used by all leading Body Shops for Paint Touch-Up and Pinstriping. Finest quality squirrel hair Stripers made lacquer and enamel resistant. The Sword Style is the best for all-around work. Excellent for auto body touch-up and pinstriping. Made from 100% pure unmixed squirrel hair.

SIZE	PRICE
00	13.80
0	14.40
1	15.75
2	16.95
3	18.35
4	19.65



XCaliber Striper

What makes the XCaliber Striper special is its short hair length (only 1-1/2 inches vs. the average 2 inch & 2-1/4 inch). This shorter hair length allows greater control for intricate designs as well as long lines. Available in 0000, 000, 00, & 0.

SIZE	PRICE
0000	22.85
000	23.50
00	24.00
0	24.75



Series 10 - Original "Mack" Sword Striping Brush

Original "Mack" Sword Striping Brush is made from 100% unmixed Blue Squirrel Hair. Hand crafted and shaped as it was many years ago. Extra attention given to Quality Control with respect to shape & cleaning. The very finest grade of Blue Squirrel. Our new "Blue" thread ferrule.

SIZE	PRICE
000	19.60
00	20.25
0	21.00
1	21.60
2	22.90
3	24.25
4	25.50



"Mack-Lite"



The "Mack-Lite": The striper with less belly. The shape is similar to the "Old Dominican", which was discontinued several years ago. Made with kasan squirrel hair and bound with a brass ferrule. Length out is graduated from 1-5/8" to 2". Available in sizes 00, 0, 1, & 2.

SIZE	PRICE
00	26.50
0	27.40
1	27.95
2	28.80



"Mack-Belly"



The "Mack-Belly": Exactly like the "Mack-Lite", only more "belly" to the shape in order to carry more paint. Same sizes & length out as the "Mack-Lite". Made with kasan squirrel hair.

SIZE	PRICE
00	25.40
0	26.25
1	27.00
2	27.80



"Fast-Lite"



The "Fast-Lite": Similar to the "Mack-Lite", only the hair length is longer, and it is made with blue squirrel hair. Length out is graduated from 1-7/8" to 2-1/4". Available in sizes 00, 0, 1, & 2.

SIZE	PRICE
00	27.80
0	28.50
1	29.30
2	29.95



Series 250 - The Long Handle Striper



The Long Handle Striper is great for design work and hard to reach areas. Black lacquered handles. Graduated hair length from 1-5/8" to 2". Brown kasan squirrel hair, seamless nickel ferrules. Overall length 8-1/2" to 9". Available in sizes 000, 00, 0 & 1.

SIZE	PRICE
000	16.90
00	18.95
0	22.00
1	27.75

Kafka Pinstriping Brushes

Scroller Series 1660

see detailed description here



Kafka Short Stroke Scroller Series 3 - One size only - 22.50



PRICES - SCROLLER SERIES		
SIZE	HAIR LENGTH	PRICE
0	1 3/4"	20.75
1	1 3/4"	20.75
3	1 3/4"	20.75
5	2"	21.25
6	2 1/4"	21.25

Kafka Longliner Brushes

see detailed description here



SIZE	PRICE
5 x 0	23.50
3 x 0	23.50
00	23.50
0	24.50
1	24.95

Kafka

PINSTRIPING BRUSHES

Kafka Signature Series Scrollers series 1660

All Kafka signature series pinstriping brushes can turn corners without “flare-out” and without the user “rolling the brush”— just lift and work the tip for designs that usually take years to master. Works equally well with urethanes and oil-based enamels

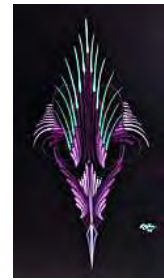
Size 0 — 20.75 ea. The size 0 brush is the smallest available. It’s capable of turning very tight corners and very fine design work while still maintaining great line consistency due to the nature of design and combination of synthetic and natural hair.

Size 1 — 20.75 ea. The size 1 is slightly larger than the 0 and will perform the same as the 0 with a slightly heavier line. As with all the Kafka brushes, they perform with oil-based enamels as well as urethane striping paint.

Size 3 — 20.75 ea. The size 3 will work in a wide variety of applications from scroll striping to shorter, long-line designs. This brush will give the user greater control in all applications and flatten the learning curve for novice strippers. The size 3 is also the most used favorite of its designer, Steve Kafka.

Size 5 — 21.25 ea. The size 5, which is slightly larger than the size 3, holds more paint and will accomplish heavier designs with ease. Depending on pressure, the line thickness can reach 1/4” and fine lines to 1/16” in the other direction. This brush is a favorite for outlining larger flame layouts, cars, trucks, and semi trucks.

Size 6 — 21.25 ea. The size 6 will give you the heavier lines needed in many instances, but still can deliver delicate design work. It’s used for initial layouts followed by smaller sizes for more delicate additions in



[click here to see video](#)



Kafka Signature Series Longliners

This series of longliner brushes was designed to run consistent, long lines with greater line quality and control. The handles were left long so they may be trimmed to fit inside the web of your hand, or to use as they are. The longliner series has received incredible accolades from all of the top long-line pinstripers

Size 5/0 — 23.50 ea. The 5/0 is the finest longliner brush available. It will lay pin lines for incredible distances with ease and beautiful line quality. It soon will become the standard for the fine line strippers everywhere.

Size 3/0 — 23.50 ea. The 3/0 will match any brush currently available for fine line work, but surpasses them all for durability, line quality, and control.

Size 00 — 23.50 ea. The 00 is probably favored for lines on most cars. Other brands of brushes include the size 00, but when you use our other sizes the reason for us making a variety becomes clear.

Size 0 — 24.50 ea. The size 0 brush performs all longliner functions as the size 1, just not as heavy. Synthetic and natural hairs are used for long life, line consistency, and control.

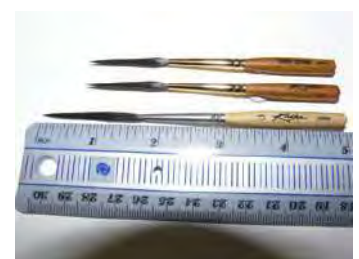
Size 1 — 24.95 ea. Size 1, the largest brush of this series, holds lots of paint and will do over a 1/4” (6.4 mm) line with ease. It will also do fine lines with less pressure perfectly



Kafka Design Series Short Stroke Brush

we have a shorter version of our number one seller, the #3 signature series scrolling brush. This will help the new pinstriper navigate intricate loops and scroll designs easily and flame outlines will be achieved with greater ease.

It has a gold plated ferrule, a dark stained natural wood handle, and the most successful hair combination. **One size only. - 22.50 ea.**



Signwriters Bulletin Fitches & Cutters



LUCO SERIES #1640
SHORT-FAVOURITE
 A standard short bristle fitch for clean accurate work on sheet metal, cardboard and other smooth surfaces.

SIZE	PRICE
1/4"	\$ 11.95
1/2"	12.95
3/4"	16.00
1"	23.85
1 1/4"	29.50



LUCO SERIES #1700s
LONG - SUPER
 A longer bristle for rough or pitted surfaces such as wood or brick. Carries more colour than the favourite.

SIZE	PRICE
1/4"	\$ 13.20
1/2"	14.50
3/4"	19.75
1"	29.50



Angular Fitch Liner

SERIES 4090

• **Finest 100% White Hog Bristle** • **Seamless Nickel Ferrules** • **Long Blue Varnished Handle**

This angular fitch is good for awning work. Sign painters also find it easier to use an angular brush when working on a wall or upright surface. It is good for outdoor work (awnings, walls, bulletins and rough surfaces). This brush is not chiseled. There is no advantage to chisel an angular liner, since most sign painters want an even down stroke.



SIZE	PRICE
1/4"	3.95
1/2"	5.75
3/4"	7.85
1"	11.50

LUCO
BULLETIN CUTTERS
#1808
WHITE BRISTLE
CUTTER

SIZE	PRICE
1 1/4" 30mm	15.25
1 1/2" 40mm	17.55
2" 50mm	26.35
2 1/2" 60mm	31.90
3" 70mm	37.35
3 1/4" 80mm	45.95



Our best Red Sable Brush. Perma Point Series 520

Natural tips, hand cupped to needle-sharp point. Short hair length.

Used extensively by photographers, photoengravers, lithographers and artists for retouching, spotting, opaquing and for cleaning up lettering and type to be reproduced. Rustproof nickel plated seamless

SIZE	PRICE
00000	\$ 7.10
000	7.45
00	7.70
0	7.95
1	8.75
2	10.25
3	10.90



Retouch Brushes

LUCO-LON Synthetic Sable Series #19

A synthetic sable that performs equal to most pure sable brushes. Excellent elasticity. Split -proof point. Will hold large amounts of colour, yet paint a fine line. Ideal for dry brush techniques.

SIZE	PRICE
000	\$ 5.85
00	5.95
0	6.10
1	6.45
2	6.75
3	7.50

SIZE	PRICE
4	\$ 7.95
5	8.95
6	9.95
8	11.30
10	14.50
12	17.45

LUCO-LON Synthetic Sable Retouch #14



A synthetic sable brush for retouching, spotting, opaquing. Extra sharp point with good color retention. Performs well with all media.

SIZE	PRICE
10 x 0	\$ 4.65
2 x 0	4.85
0	5.00
1	5.15
2	5.75
4	6.95