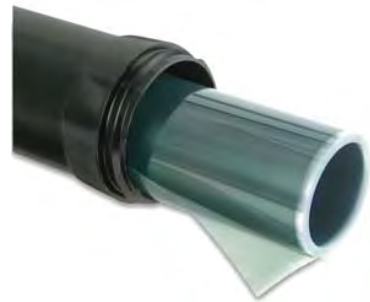




ULANO® Hand Cut Stencil Film

WATER SOLUBLE TYPE

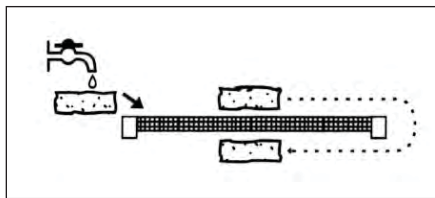
ULANO® CUT GREEN is a hand-cut screen process film which can be adhered with plain water. No adhering solvents are necessary. Adhesion is excellent to all fabrics. The backing sheet is a high-transparency 3-mil polyester, affording smooth cutting and superior stick-back for corrections. A special adhesive layer provides easy peeling and removal of the backing sheet after drying. The emulsion layer is formulated to retain edge sharpness and to resist bleeding. Compatible with all inks, except those containing water.



| ROLL SIZE | ROLL PRICE | CUT PIECES |
|------------|------------|---------------|
| 44" X 300" | 265.00 | 35.00 PER YD. |

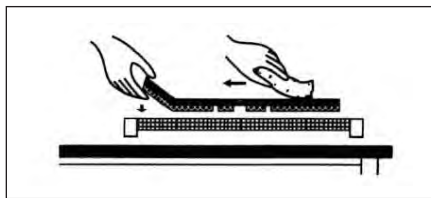
ULANO® CUT GREEN WATER SOLUBLE FILM

New Simplified Adhering Technique



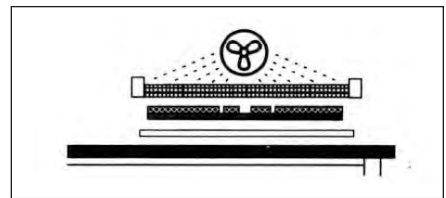
STEP 1 - PREPARATION

This technique requires a clean, well stretched screen. Using a clean sponge, thoroughly wet both sides of the fabric with water.



STEP 2 - ADHERING

Place the emulsion side of the cut stencil against the bottom of the wet screen. Using light pressure, move the wet sponge over the entire surface of the plastic backing to adhere the film to the fabric.



STEP 3 - DRYING

With the frame flat, blot the film from the backing sheet with the squeegee side with newsprint. Peel off the backing sheet when the film is dry. The adhesive will remain on the backing sheet. A cold air fan may be used to speed drying.

HAND CUT STENCIL FILM

Hand Cut Stencil Film

ULANO® S3S-STASHARP®

Solvent adhering knife-cut film on a 300-gauge polyester backing. For use with **water based and mild solvent based inks**. Adhere with Sta-Sharp Adhering Liquid.

| SIZE | PRICE |
|------------|--------|
| 41" x 300" | 224.00 |

SOLVENT FILM ADHERING LIQUID

4 Litre 29.35

MacDermid Autotype SOLVENT GREEN

Solvent adhering stencil film which can be used with **water based inks**.

Solvent green is available on a clear .003 polyester base. The pale green coating offers excellent visibility for multi-colored artwork.

| SIZE | PRICE |
|------------|--------|
| 41" X 394" | 176.00 |

• EASY TO CUT

• EASY TO ADHERE

• EASY TO PEEL

MASKING FILMS



MASKING FILM 3 mil

Ruby 3 - Rubylith

This light-safe, knife-cut film is coated onto a polyester backing sheet. It can be cut manually or on a plotter to produce masks for film contacting, plate making, and film positives for photographic stencil production.



| ROLLS | |
|-------------|---------|
| SIZE | PRICE |
| 40" x 300" | 139.00 |
| 48" x 300" | 158.00 |
| 48" x 1800" | 1045.00 |



HANDCUT MASKING FILM

